

SYA SILICONE CVT INTAKE KIT- POLARIS XPEDITION

71-12347



HIGHLIFTER

SEIZMIK™

FALCON RIDGE

**SYA SNORKEL
YOUR ATV**

SYSTEM 3
OFF-ROAD
Traction. Strength. Style.

EPI
PERFORMANCE

✉ sales@highlifter.com

☎ 800-372-1137 | 8:00am - 6:00pm CST

📍 7455 Atkinson Drive, Shreveport, LA 71129



www.highlifter.com

Parts Available For These Popular Brands and Others

POLARIS

can-am

HONDA

Kawasaki

YAMAHA

READ BEFORE INSTALLATION

This snorkel kit is intended to provide clean, dry air to the engine, belt housing if equipped, and other parts needing venting on ATVs/UTVs, but does not necessarily mean the ATV/UTV can exceed the OE manufacturer's stated maximum rated water line depth. The snorkel kit is intended only as an additional margin of protection in the event that the ATV/UTV is inadvertently driven into water deeper than the OE manufacturer's air intakes will tolerate. There are many considerations to make when increasing water line depth and a snorkel is just one component.

This snorkel kit is NOT intended for riding in water deeper than what the OE manufacturer of your ATV/UTV recommends. Riding in water deeper than stated by the OE manufacturer is dangerous possibly causing the driver of the ATV/UTV to ride unexpectedly into deeper water subjecting the driver and/or passengers to serious injury or death. Riding in water deeper than stated by the OE manufacturer can also cause complete failure of the ATV/UTV's engine. OE manufacturers will almost certainly void any warranty on the ATV/UTV if a snorkel is or has been installed at the time warranty service is sought.

It is the installer's responsibility to verify all components and particularly that any templates are correct before starting any part of the snorkel installation. The snorkel should be installed by a professional mechanic or one who is by experience fully competent with snorkel installation. Please note this is a custom installation and you may want/need to modify for your particular installation and additional items may be needed to install. Any snorkel, even those properly installed can and possibly leak under certain conditions causing catastrophic engine failure. The ATV/UTV owner should frequently check components for wear and tear and look for any signs of leaking at the joints. **THERE IS NO WARRANTY OR RETURN OF THIS SNORKEL, NOR IS THERE ANY WARRANTY ON DAMAGE DONE TO AN ATV/UTV AS A RESULT OF THE INSTALLED SNORKEL REGARDLESS OF WHOM PURCHASED OR INSTALLED THE SNORKEL.**

If you are the dealer or installer, it is your responsibility to inform the user of this warranty and dangers of riding in water deeper than the OE recommends.

When using this product, your vehicle will be modified to increase performance. Whenever a modification is done to an ATV/UTV, you change the performance of the vehicle including fuel system, handling, braking, and steering. You should always drive safely and avoid any maneuvers that would cause harm, serious injury or death to the driver or passengers. This product is manufactured only for off-road use.

When installing the snorkel kit, you are altering the airflow to the carburetor/throttle body and a jet kit or EFI programmer may or may not be required once the kit is installed.

ALL SALES OF SNORKEL KITS ARE FINAL – NO RETURNS, NO EXCEPTIONS.

NOTE: Make sure that you seal your air box & clutch cover with dielectric grease or silicone. This is very important in preventing water from getting into the air intake system.

BEFORE STARTING YOU WILL NEED THE FOLLOWING:

ULTRA BLACK BRAND SILICONE OR MEDIUM SILICONE

DIELECTRIC GREASE (optional)

SYA **SILICONE CVT INTAKE KIT**- POLARIS XPEDITION - **71-12347**

PARTS

INCLUDED PARTS	QTY
CVT Intake Tube	1
90/110 12mm Wide Clamps	2

TOOLS

REQUIRED TOOLS
8mm Socket
Screwdriver

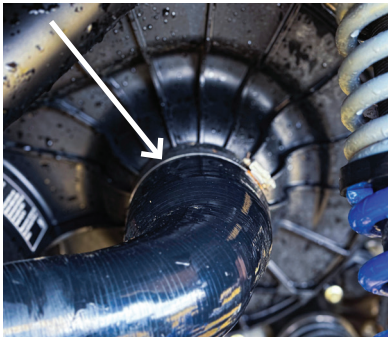


INSTALLATION

1

Using a screwdriver or 8mm socket, remove the (2) clamps on the belt cover and the top of the 90 degree portion of the existing hose as shown.

Remove the OEM CVT intake duct.



2

Install the new CVT intake duct using the included new supplied clamps.

